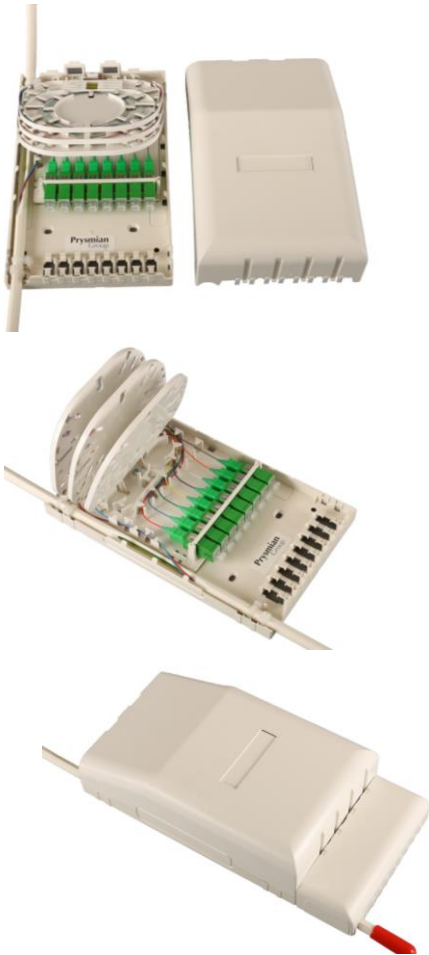


Prysmian Part Numbers: See below



## Product description

The PBI-8SC is a riser box designed for use within apartment blocks and mid/high rise office blocks. The unit houses three splice trays and up to 8 SC type pigtailed and adapters. Each splice tray is able to accommodate 12 fibre splices. An in-line cable entry port enables the box to be installed onto an in-line riser cable and up to 24 drop ports are available for drop cables of up to 5mm in diameter.

## DESIGN & CONSTRUCTION

- Allows splicing from in line or butt cables to customer drop cables.
- Suitable for two butt or one inline cable of up to 15mm in diameter.
- In line cables enter the unit on the left hand side.
- 24 drop cables (OD 5 mm) can be spliced. Drop cables exit the unit from the bottom face.
- The drop cable entries are suitable for cables or tubes from 2.5 to 5 mm in diameter.
- Up to 8 pre-connectorized drop cables can be accommodated using SC type connectors.
- Up to 12 fusion splices can be accommodated into each of the splice trays.
- Can accommodate optical splitters. Contact Prysmian for further details.
- Cable management ensures a 20mm minimum bend radius.
- Easily installed and fitted to the wall or inside a riser.
- Suitable for internal use only and manufactured from UL94-V0 rated material.
- Input and output cables are retained using cable ties.

## Technical data

- No of Splice Trays: 3
- Max capacity (fibres): 36
- Max diameter of in line cable: 15mm
- Max no. of Connectorized Drops: 8
- Drop Cable Connector Type: SC
- Max number of drop cables: 24
- Max diameter of drop cables: 5mm
- Required space envelope (mm): (h) 210 x (w) 130 x (d)60
- Operating temperature: -20°C to + 60°C (5 to 95% RH)
- Material: FR ABS
- Colour: White RAL 9016
- Flammability rating: UL94-V0

## Logistics

- Packing Dimensions (mm): (h) 230  
(w) 150  
(d) 75
- Packed Weight (kg): 0.45
- Net weight (kg): 0.40

## Main characteristics

### Kit Contents

• The PBI-8SC is supplied with a base, cover, 3 splice trays, 8 SC adapters and 8 SC pigtails, cable ties for fixing the in-line cable and wall fixings.

• **Note** Splice protectors and cable ties to secure the drop cables are not supplied and must be ordered separately.

### Additional Items

- Cable Ties (for fixing drop cables)
- Splice Protectors

### Part Numbers

- **XCPSC03167** – 1 tray, 8 SC/APC Adapters
- **XCPSC03168** – 3 trays, 8 SC/APC Adapters
- **XCPSC03169** – 1 tray, 8 SC/PAC Pigtails + Adapters
- **XCPSC03170** – 3 Trays, 8 SC/APC Pigtails and Adapters

## Additional Items

### Cable Ties

Cable ties are used for securing drop cables in to the box. The cable ties are 100mm in length and 2.5mm wide.

**Prysmian Part No. – XKTSC00370 (Bag of 100)**



### Heat Shrink Splice Protectors

Splice protectors are used to protect the fibre splice. They are 2.4mm in diameter and 45mm in length.

**Prysmian Part No. – XKTSC00050 (pack of 12)**  
**XPESC00031 (pack of 50)**



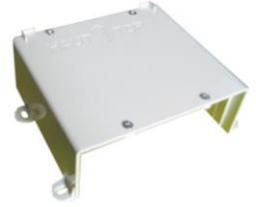
## Additional Items

---

### Wall Support

An optional kit to mount the PBI to the wall. The wall support enables fixing of the PBI onto a plate allowing cables to pass underneath. The kit contains the fixings necessary to mount the PBI.

***Prysmian Part Number - XCPSC02088***



---

Please contact your local sales office listed on [www.prysmiangroup.com](http://www.prysmiangroup.com)

---

© Prysmian Group 2021, All Rights Reserved.

The information contained within this document must not be copied, reprinted or reproduced in any form, either wholly or in part, without the written consent of Prysmian Group. The information is believed correct at the time of issue. Prysmian Group reserves the right to amend this specification without notice. This specification is not contractually valid unless specifically authorised by Prysmian Group.